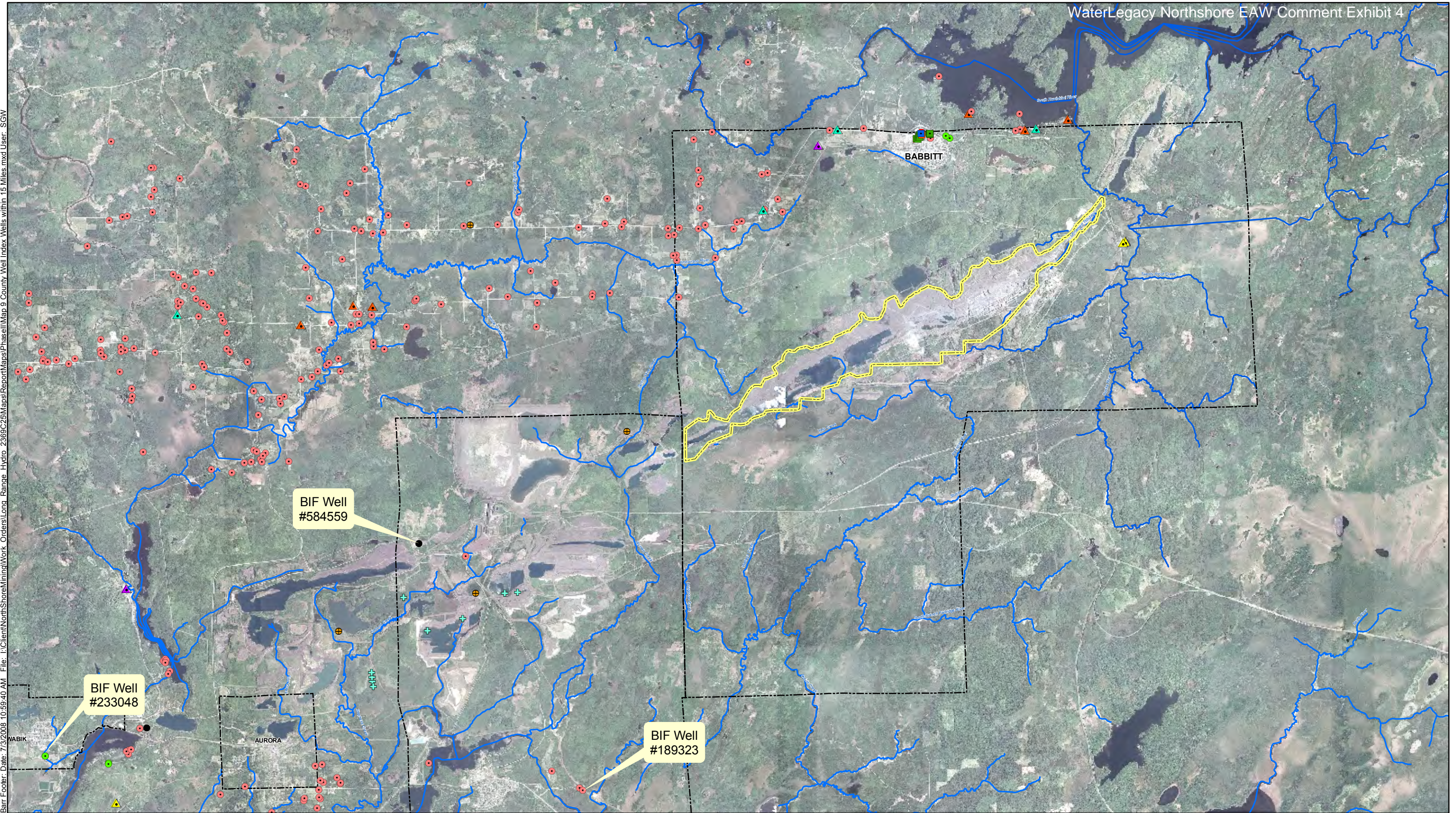
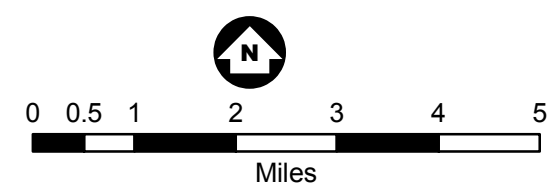


Bar Footer: Date: 7/3/2008 10:59:40 AM File: I:\Client\NorthShoreMining\Work Orders\Long Range Hydro 2369C25\Maps\Report\Map 9 County Well Index Wells within 15 Miles.mxd User: SGW



- | | | |
|--------------------|------------------------------|---|
| Mine Site Boundary | County Well Index Wells | Piezometer, A |
| City Boundaries | Abandoned, Sealed | Public Supply/non-comm.-non-transient, |
| Streams and Rivers | Community Supply (municipal) | Public Supply/non-comm.-transient, |
| | Domestic | Public Supply/non-comm.-transient, Active |
| | Industrial, Active | Public Supply/non-community, Active |
| | Monitor well, | Scientific Investigation, Status Unknown |
| | Monitor well, Active | Unknown |



Map 9
 COUNTY WELL INDEX DATA WITHIN
 15 MILES OF MINE SITE
 Northshore Mining
 Babbitt, Minnesota