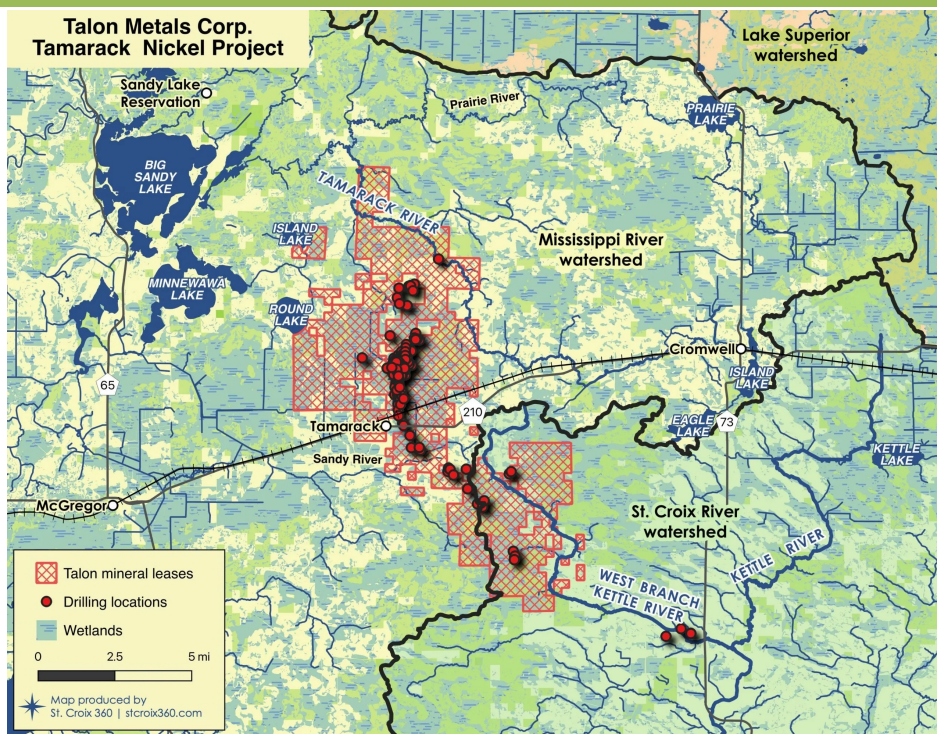


Talon Metals/Rio Tinto Proposed Sulfide Mine



WHERE WOULD IT BE?

Talon Metals controls 31,000 acres of private lands and state leases for nickel, copper, and cobalt found in sulfide ore bodies near Tamarack, about 50 miles west of Duluth.

SULFIDE MINING THREAT

Sulfide mining contaminates drinking water, impairs wild rice, increases mercury contamination of fish, and dewateres wetlands and shallow lakes.

The Future of the Region is at Stake

WATERSHEDS

The Talon mine would impact the headwaters of the Tamarack and Sandy Rivers, which flow to the Mississippi River via Big Sandy Lake and the west branch of the Kettle River, which flows into the St. Croix River. The Kettle and St. Croix Rivers are Wild and Scenic Rivers treasured for canoeing, kayaking, and rafting.

LAKE COMMUNITIES

Homes, cabins, fishing, ricing, boating, and recreation on Big Round Lake, Big Sandy Lake, Lake Minnewawa, and Island Lake are all at risk.

TRIBAL RESOURCES

A Tamarack sulfide mine would impact 1855, and 1854 Treaty resources, including wild rice lakes, wetlands, and fisheries and the lands and waters of the Mille Lacs Band of Ojibwe, the East Lake and Lake Minnewawa tribal communities, and the Sandy Lake Band of Mississippi Chippewa.



Why is a Tamarack Area Mine a Serious Concern?

MASSIVE SULFIDE MINERALIZED ZONE

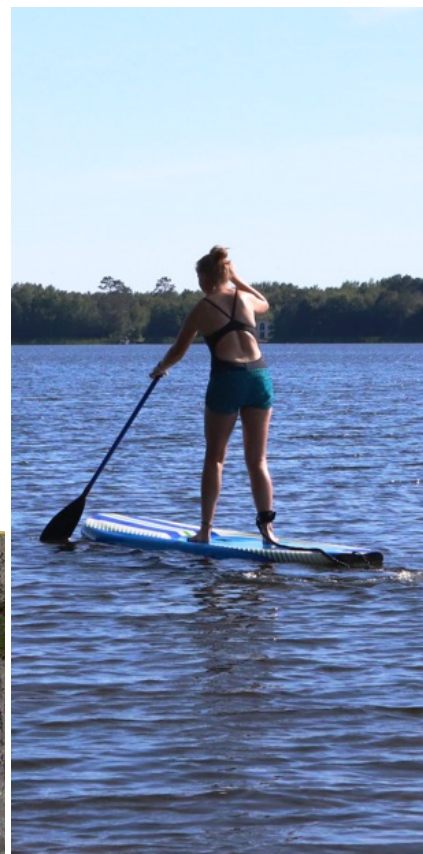
The Tamarack area contains a massive sulfide mineralized zone with high concentrations of nickel, copper, and cobalt ore and recoverable levels of platinum-group metals. **Higher ore levels mean higher sulfide levels in the rock, increasing risks of sulfate pollution** that harms downstream wild rice, increases mercury contamination of fish, and can leach toxic metals into groundwater (drinking water) as well as surface water.

MINNESOTA'S POOR REGULATORY TRACK RECORD

Minnesota has a poor track record as a regulator of mining pollution. Courts have suspended and reversed key PolyMet permits. Talon Metals has proposed for environmental review a mine project far smaller than its “district-scale” potential.

POOR TRACK RECORD OF MINING COMPANIES

Talon Metals is a British Virgin Islands exploration company in a joint venture with the Rio Tinto mining company. Rio Tinto has a national and global history of environmental pollution and has willfully destroyed indigenous cultural resources to maximize mining.



*Round Lake (above)
St. Croix River (left)*



What Can You Do?

- **Sign up with [waterlegacy.org](https://www.waterlegacy.org)** to learn about upcoming events and opportunities to learn how you can participate effectively in the upcoming environmental review process.
- **Contact Sophia@waterlegacy.org** to share or request information.
- **Share this** Talon Metals/Rio Tinto mine fact sheet with your friends and neighbors. Sulfide mining must not contaminate **any** Minnesota watersheds.

Primary Sources:

- Tamarack North Project NI 43-101 Technical Reports (Jan. 2021, Nov. 2022).
- Map of water resources and exploration – St. Croix 360 (June 2023)

Need more info? Contact info@waterlegacy.org