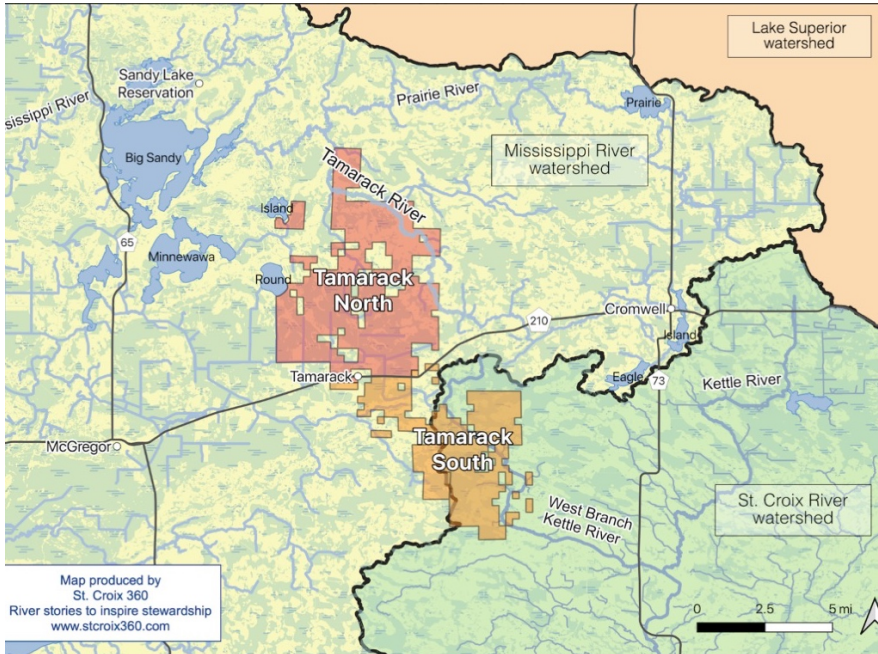


Tamarack Sulfide Mine Threat



WHERE WOULD IT BE?

Minnesota has approved 30,000 acres of active mineral leases for nickel, copper, and cobalt found in sulfide ore bodies near the small town of Tamarack, about 50 miles west of Duluth.

SULFIDE MINING THREAT

Sulfide mining contaminates drinking water, impairs wild rice, and increases mercury contamination of fish, affecting local communities and natural and tribal resources.

The Future of the Region is at Stake

WATERSHEDS

The Tamarack sulfide mine would be at headwaters of the Kettle River, which flows into the St. Croix River and the Tamarack River, which flows to the Mississippi River via Big Sandy Lake. The Kettle River and St. Croix Rivers are Wild and Scenic Rivers.

LAKE COMMUNITIES

Homes, cabins, fishing, ricing, boating and recreation on Big Round Lake, Big Sandy Lake, Lake Minnewawa, and Island Lake are all at risk.

TRIBAL RESOURCES

A Tamarack sulfide mine could impact 1854 and 1837 Treaty resources, high quality wild rice lakes, wetlands, and fisheries used by the Mille Lacs Band of Ojibwe, the Sandy Lake Band of Ojibwe, and the Fond du Lac Band of Lake Superior Chippewa.



Savannah Portage State Park

Why is the Tamarack Mine A Serious Threat?

MASSIVE SULFIDE MINERALIZED ZONE

The Tamarack area contains a massive sulfide mineralized zone with high concentrations of nickel, copper, and cobalt ore and recoverable levels of platinum-group metals. Higher ore levels mean higher sulfide levels in the rock, increasing risks of sulfate pollution that harms downstream wild rice and increases mercury contamination of fish.

MINNESOTA'S POOR REGULATORY TRACK RECORD

Minnesota has a poor track record as a regulator of mining pollution. Recently, courts have suspended and reversed PolyMet permits and found that Minnesota agencies failed to limit sulfate pollution under the federal Clean Water Act.

POOR TRACK RECORD OF CONTROLLING COMPANIES

Kennecott Exploration, part of the Rio Tinto group, and Talon Metals are in a joint venture responsible for exploration and proposed operation of the Tamarack Project. Rio Tinto has an extensive global history of environmental degradation and human rights abuses.



*Round Lake (above)
St. Croix River (left)*



What Can You Do?

- **Sign up** at [waterlegacy.org](https://www.waterlegacy.org) to learn about upcoming events and opportunities to oppose sulfide mine pollution.
- **Visit** [waterlegacy.org](https://www.waterlegacy.org) and search “Tamarack” to find current information.
- **Share what you know** about Tamarack mine risks with your friends and neighbors. Sulfide mining threatens **all** major Minnesota watersheds.

Primary Sources:

- Tamarack North Project NI 101-43 Technical Report (Preliminary Economic Assessment) (Mar. 12, 2020)
- <https://www.stcroix360.com/2020/07/mining-exploration-near-headwaters-streams-causes-pollution-concerns/>

Need more info? Contact info@waterlegacy.org (651-646-8890)