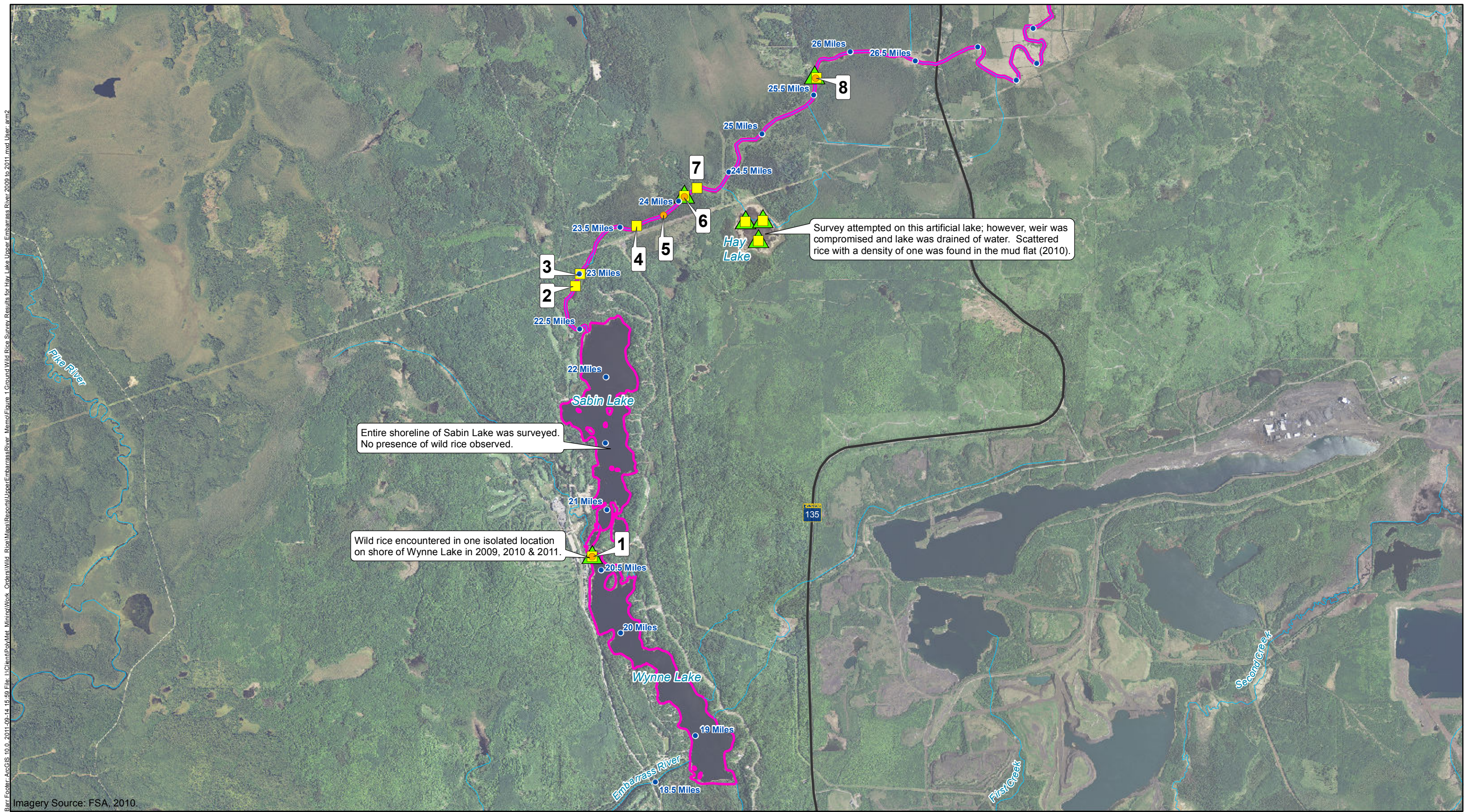


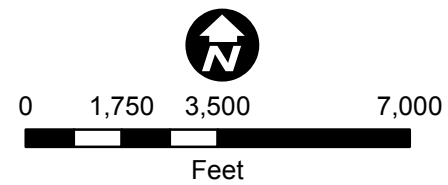
Bar Footer: ArcGIS 10.0, 2011-09-14 15:59 File: I:\Client\Polymet\Minima\Work_Orders\Wild_Rice\Mapa\Reports\UpperEmbarrassRiver_Memo\Figure_1\GroundWildRiceSurveyResultsForHayLakeUpperEmbarrassRiver2009to2011.mxd User: arm2

Imagery Source: FSA, 2010.



- ▲ Wild Rice Observed in 2009
- Wild Rice Observed in 2010
- Wild Rice Observed in 2011
- Stream or Shoreline Surveyed in 2009, 2010 and 2011

1 Reference Point



GROUND WILD RICE SURVEY RESULTS
FOR HAY LAKE (MNID 69435) & THE
EMBARRASS RIVER BETWEEN WYNNE LAKE
AND STATE HIGHWAY 135
2009 - 2011
NorthMet Project
PolyMet Mining, Inc.
Hoyt Lakes, Minnesota